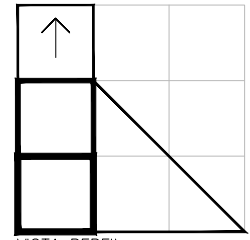
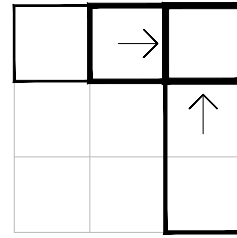


VISTA FRONTAL

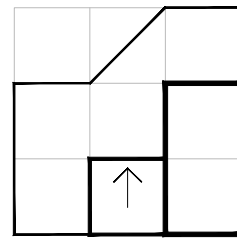
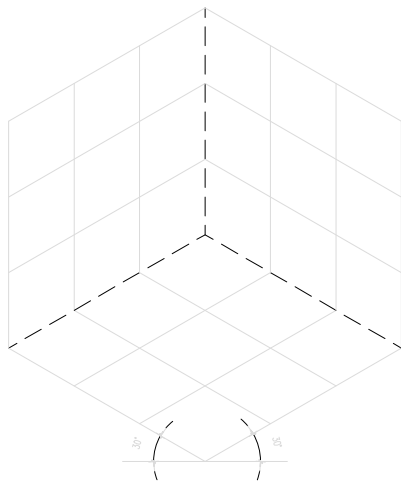


VISTA PERFIL

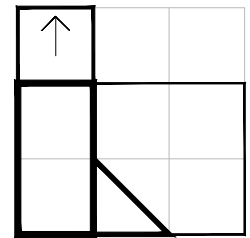


VISTA SUPERIOR

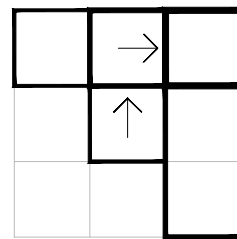
10



VISTA FRONTAL

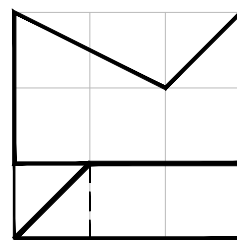
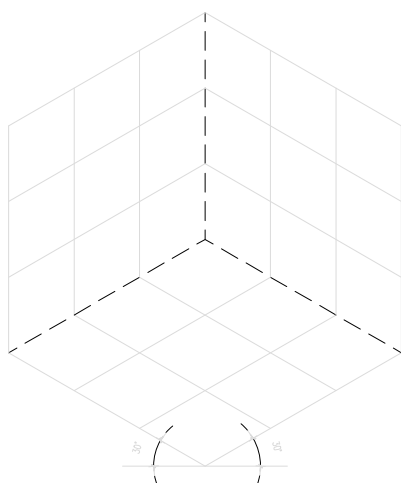


VISTA PERFIL

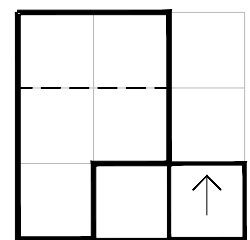


VISTA SUPERIOR

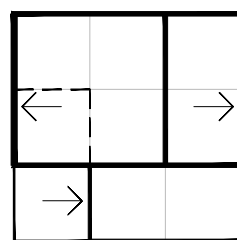
11



VISTA FRONTAL



VISTA PERFIL



VISTA SUPERIOR

12

Se establecen dos funciones inversas:

- A partir del soporte 2D ser capaces de recomponer la imagen 3D representada.