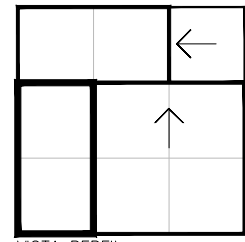
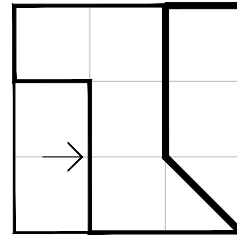


VISTA FRONTAL

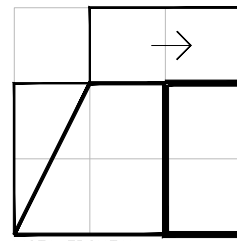
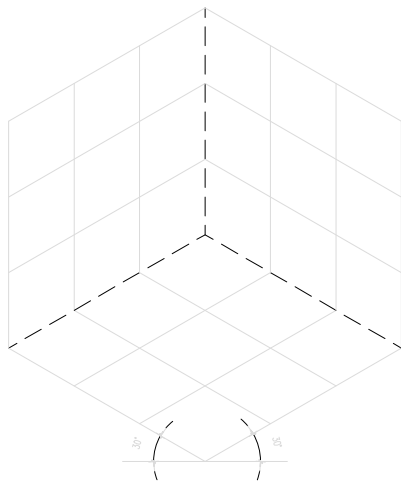


VISTA PERFIL

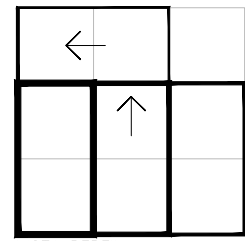


VISTA SUPERIOR

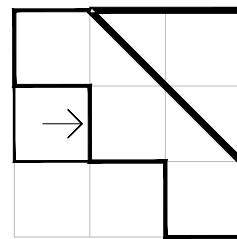
7



VISTA FRONTAL

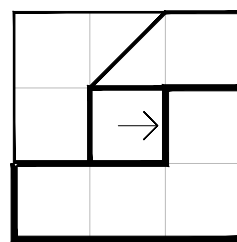
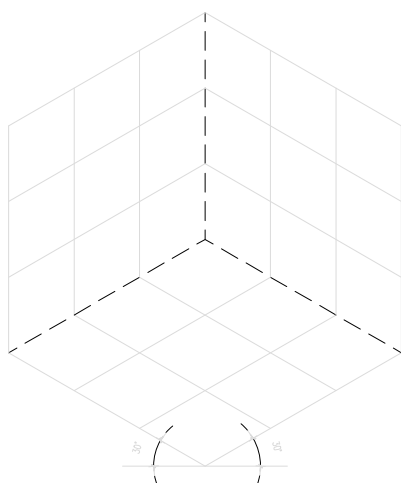


VISTA PERFIL

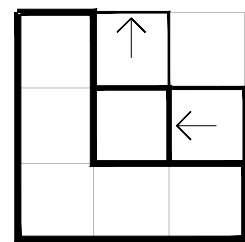


VISTA SUPERIOR

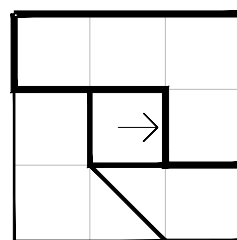
8



VISTA FRONTAL



VISTA PERFIL



VISTA SUPERIOR

9

Se establecen dos funciones inversas:

- A partir del soporte 2D ser capaces de recomponer la imagen 3D representada.